

The background is a solid green color with various white line-art icons scattered around. These icons include stacks of money, individual coins, a piggy bank, a bar chart, a dollar sign in a circle, and a hand holding a coin. The text is centered in the upper half of the image.

Club Management Association of America

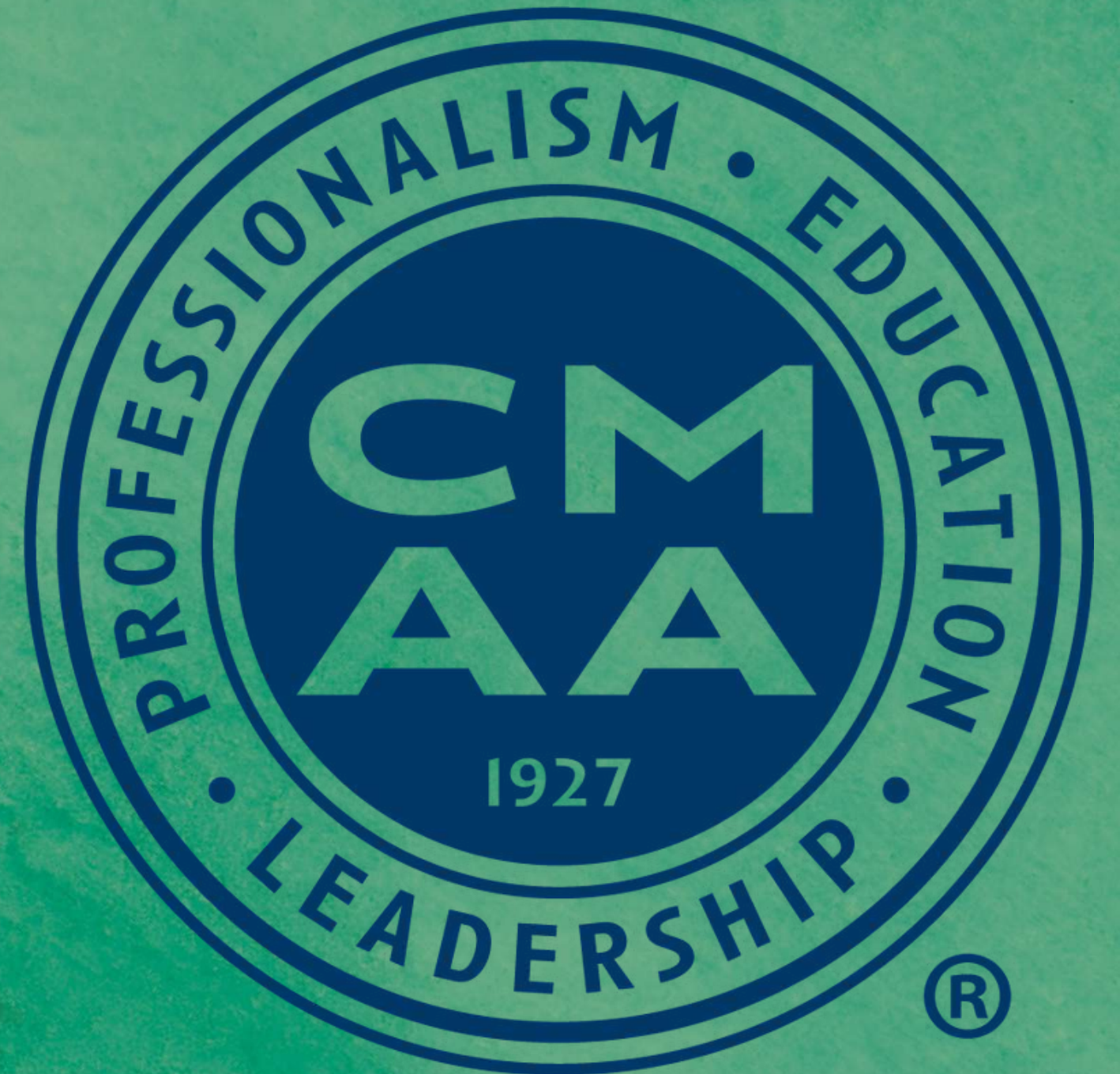
Additional Budget Request for
Spring 2025



Who are we?

Introduction to CMAAA

- We are a proud Student Chapter of the Club Management Association of America.
- This organization connects **club managers worldwide.**
- Provides opportunities for:
 - Networking and professional growth.
 - Sharing industry best practices.
 - Enhancing leadership skills.
- Accessing educational resources.








What are Clubs?



Country Club

Among the most common clubs in CMAA.

Operate as private membership organizations.



The Significance

Clubs play a major role at Collins College of Hospitality Management.


Offers students insights into working in **luxury settings**.



Social Clubs

Commonly located in cities.

Private membership but focuses more on social connections.



CMAA Conferences

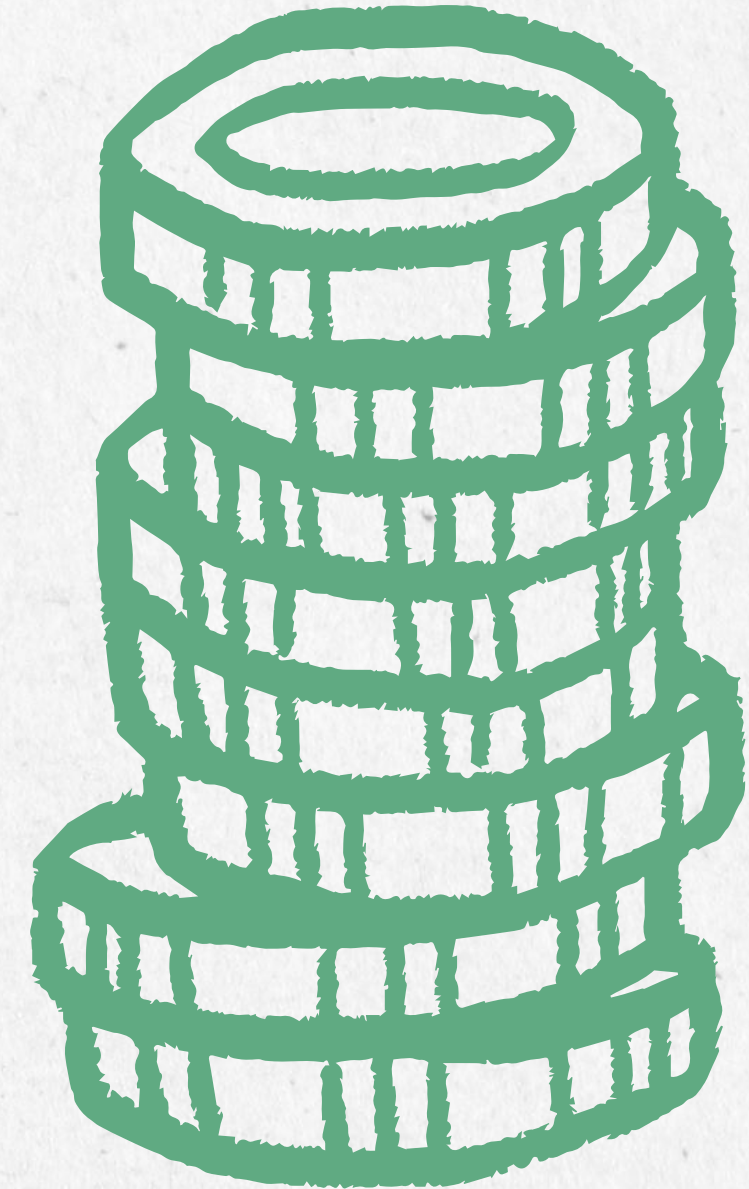


- **Two Conferences Annually:**
 - One held each semester for student members.
- **National Student Education Conference (NSEC):**
 - Occurs in November.
 - Focused on education, club touring, and networking.
- **World Conference:**
 - Upcoming from **February 5-8th.**
 - Networking with industry leaders.
 - Opportunities to secure internships and jobs.
 - Insights into the club management industry from guest speakers.



Educational Value

- The CMAA World Conference and Club Business Expo offers a **full slate of events and activities specifically for students.**
- Attendees gain access to **industry leaders, networking opportunities,** and the chance to secure **internships and jobs.**
- **Some Specific Conference Sessions**
 - Student Networking Event
 - Student Achievement Lunch
 - Student/Mentor Lunch
 - Career Opportunities & Networking Showcase
 - The **Student Shark Tank Competition**
 - Mentorship Program





World Conference Costs

- Registration closed on January 8th, 2025.
- A total of **13 students registered.**
- Conference Registration Fee:
 - **\$200 per student**
- Lodging Costs:
 - 4 rooms at **\$270 per night.**
 - Rate Includes Taxes and Fees
 - Duration: February 5–8 (**3 nights**).
- Airfare Costs
 - **\$404 R/T**



CMAA World Conference Quotes

ROUNDRIP (1 TRAVELER) [Revise this trip](#)

Los Angeles LAX to Tampa TPA
Feb 5 • 9:35 am to 5:11 pm • Nonstop
[Show details](#) **Basic Economy**

Tampa TPA to Los Angeles LAX
Feb 8 • 6:45 pm to 9:23 pm • Nonstop
[Show details](#) **Basic Economy**

Fare	\$347.31
Taxes and fees	\$56.65
Total due	\$403.96


or starting from [\\$43/month](#) ?

Cart ID: 306992866 ?

Order Date: 05-Jan-2025
Invoice #: cmaa24-012025-0098
Amount Paid: \$200.00
Amount Due: \$0.00

Item	Quantity	Price
Admission Item		
Student Registration	1	\$200.00
Subtotal		\$200.00
Total amount ordered		\$200.00
Amount Paid		\$200.00
Balance Due		\$0.00

Registration Cost -
CMAA



2 Room 2 Queen Beds Corner Jr Suite Sofa Bed
[View room details >](#)

Quick Book **\$225**
Semi-Flex

[More Rates From \\$221](#)

Flight Quote - United Airlines

Lodging Quote - Embassy Suites TPA Convention Center

World Conference Cost Chart

At-a-glance intended Costs, sorted by cost type

Type	Equation	Total Cost	Adjusted Cost (Per Student) = Total Cost/13 Students
Registration Fee	$\$200.00 * 13 \text{ Students}$	\$2,600.00	\$ 200.00
Airfare	$238.00 * 13 \text{ Students}$	\$3,094.00	\$ 238.00
Lodging	$\$270.00 * 5 \text{ Rooms} * 3 \text{ Nights}$	\$4,050.00	\$ 311.54
Total Cost	-	\$9,744.00	\$ 749.54

Financial Considerations

Our club wants to cover \$750/student, currently CMAA can only afford \$192/student - ASI Finance Committee can ensure access



Student Challenges

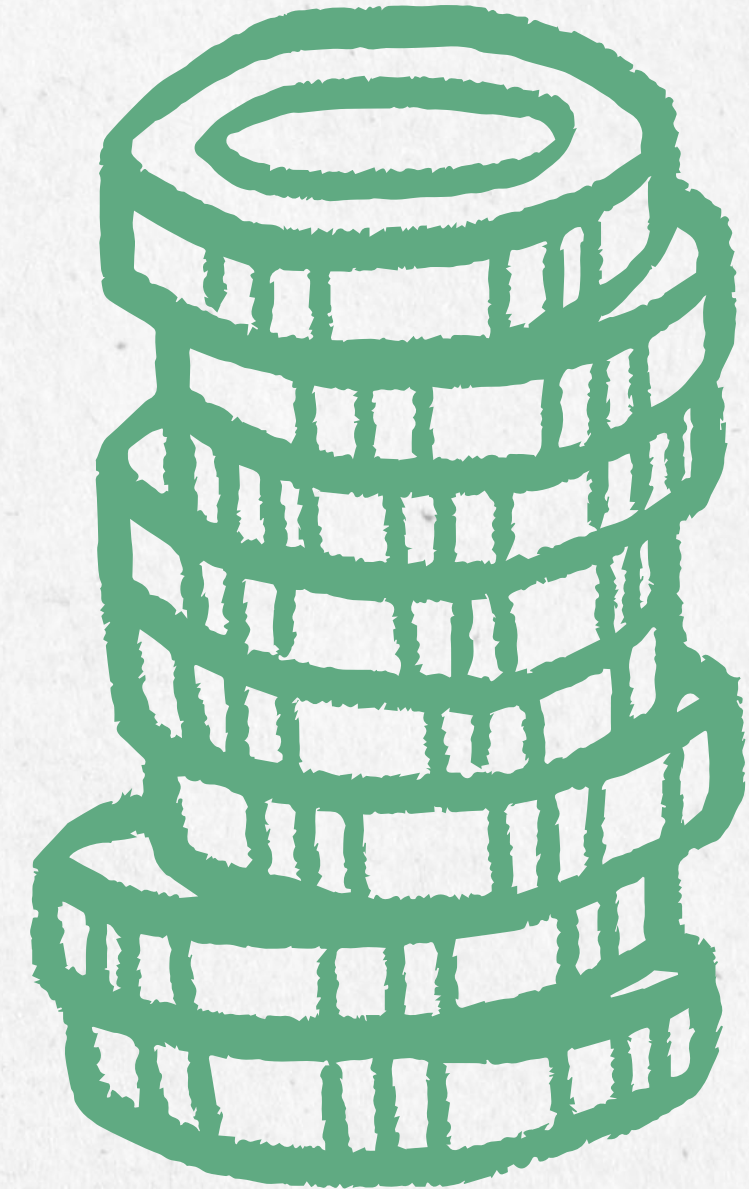
- Many students face **financial hardships.**
- The **combined cost of registration and flights** create a significant burden for participants.

Benefits to Students

- Opportunity to engage deeply in **club management.**
- Gain valuable **networking** experience.
- Potential to secure **internships** and **job offers** for the upcoming summer.

Conclusion

- Supporting our students will alleviate financial burdens and ensure full participation in the **2025 World Conference**.
- Attendees gain access to **industry leaders, networking opportunities**, and the chance to secure **internships** and **jobs**.
- We kindly request the **ASI Finance Committee** to review our club's proposal and provide the maximum funding of \$6,000 to cover these costs.
- **Impact on Cal Poly Pomona Students:**
 - Your support helps dedicated students excel in **club management** and represent our university at the highest level.





**Thank you
very much!**

we would love to hear any questions!