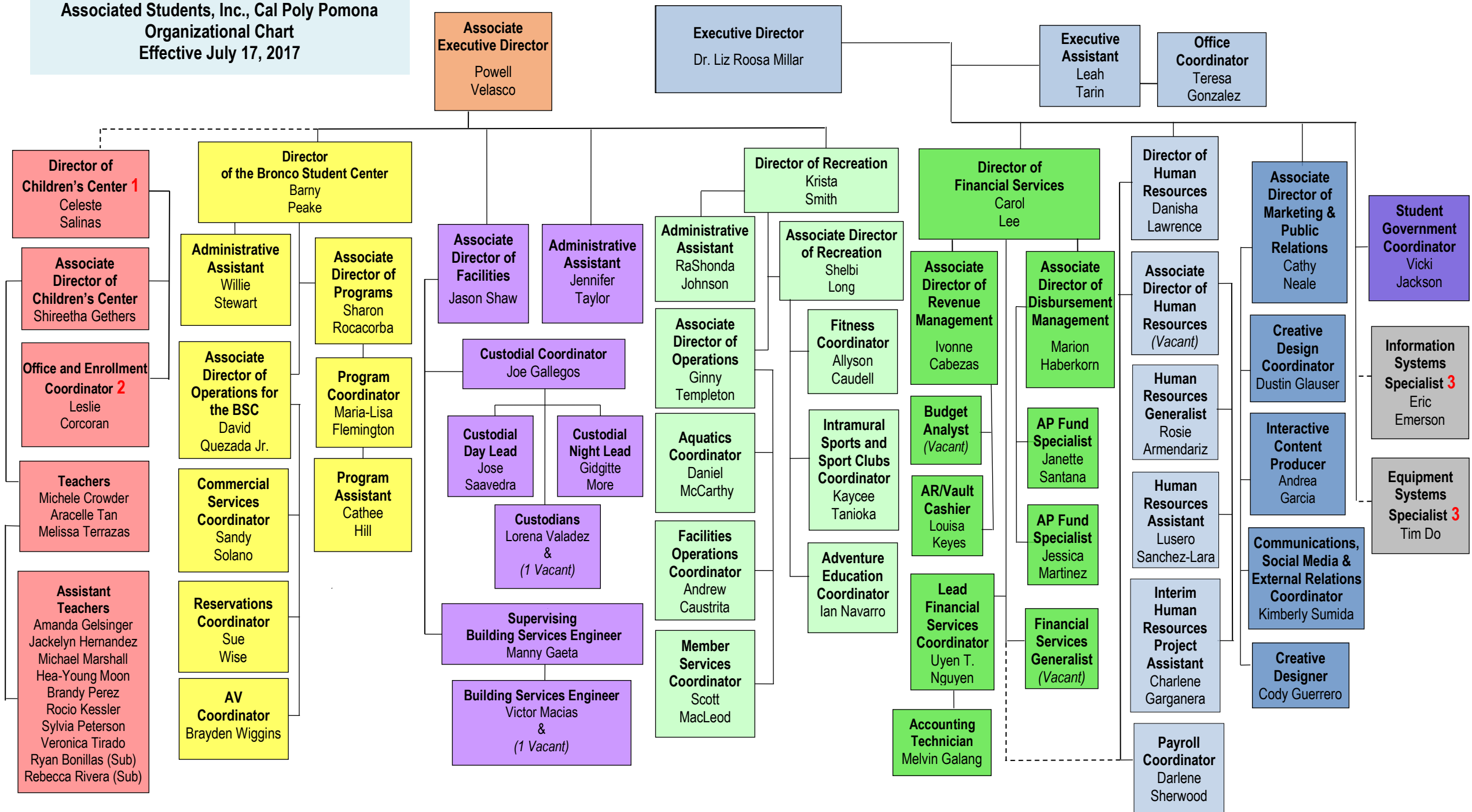


**Associated Students, Inc., Cal Poly Pomona
Organizational Chart
Effective July 17, 2017**



Revised on July 3, 2017

- 1 - CPP Employee – Direct reporting line to Associate Vice President of Student Affairs Administration
- 2 - CPP Employee – Direct reporting line to Director of Children's Center
- 3 - CPP Employee – Direct reporting line to IT Director and dotted line to ASI Executive Director