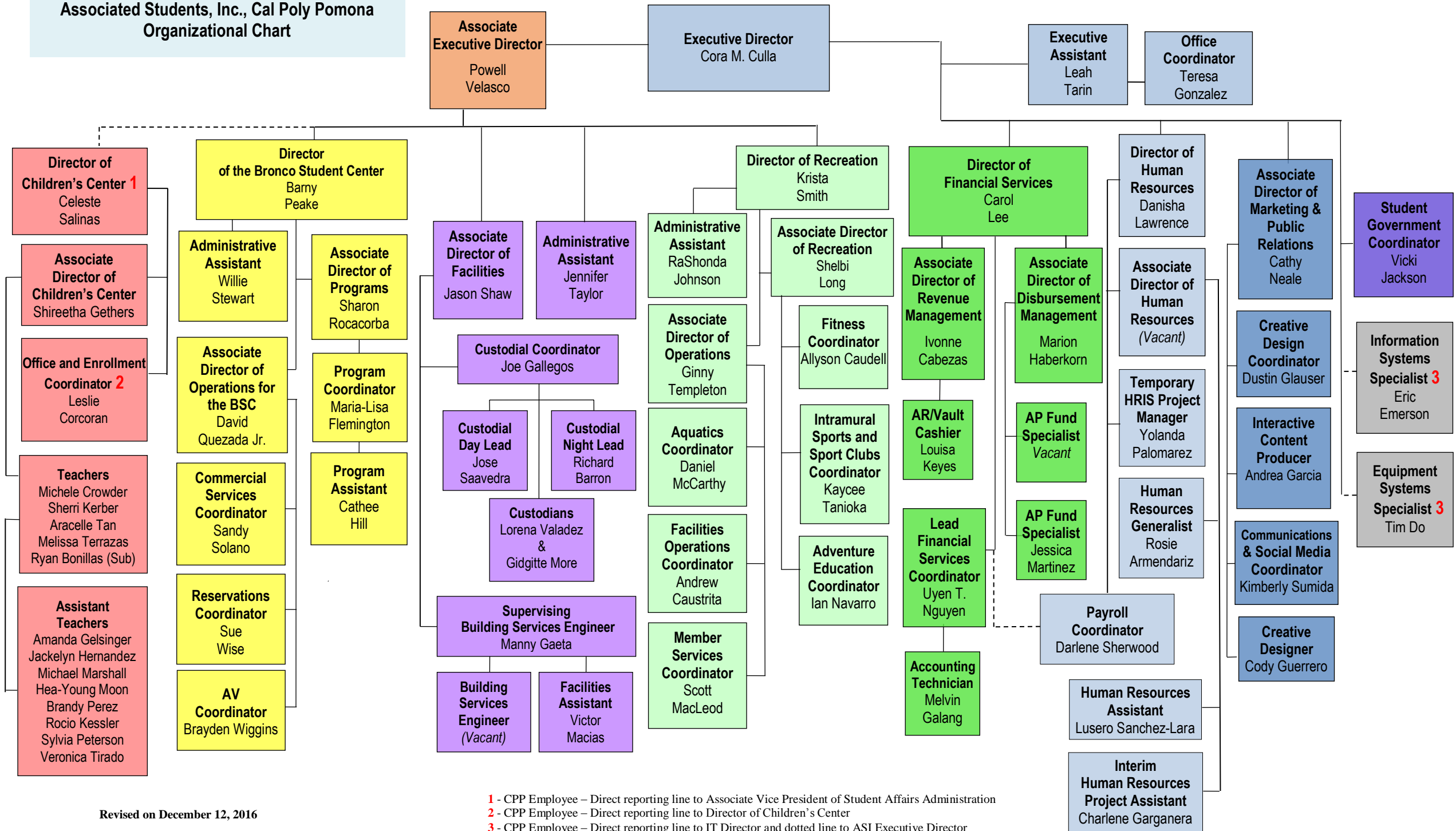


**Associated Students, Inc., Cal Poly Pomona
Organizational Chart**



Revised on December 12, 2016

1 - CPP Employee – Direct reporting line to Associate Vice President of Student Affairs Administration
 2 - CPP Employee – Direct reporting line to Director of Children’s Center
 3 - CPP Employee – Direct reporting line to IT Director and dotted line to ASI Executive Director